



**5/28 Sandown Road Ascot Vale VIC**

**2 1 1**

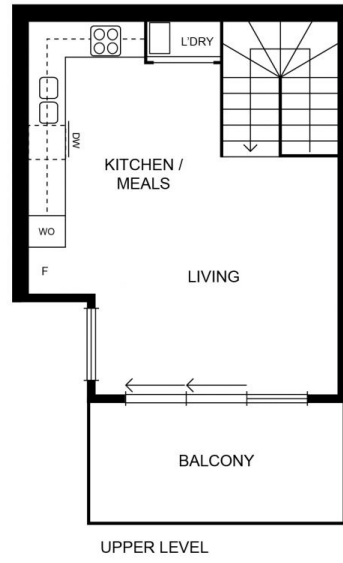
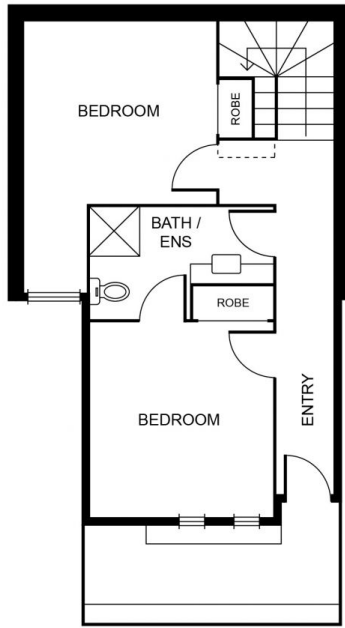
"The Corham" is a new bespoke construction perched in the inner-city yet framed by quiet suburbia, abundant leafy parks and a leisurely café culture.

**View :** <https://www.alexkarbon.com.au/lease/vic/north/as-cot-vale/residential/townhouse/7503297>

This two bedroom townhouse has a magnificent level of comfort and convenience paired with an elegant design showcasing quality materials in tones of grey, white, black with the added warmth of timber. The upstairs open plan seamlessly transitions to the wide private balcony, perfect for entertaining, while the designer kitchen displays s/s SMEG appliances, including dishwasher. The style and substance continue downstairs in the double bedrooms featuring soft carpeting and BIRs. Further inclusions are video intercom, underground carpark, split-system inverters, timber floorboards, stone benchtops and fully tiled bathroom.



**Tasma Bogdanovic**  
**03 9326 8883**



Disclaimer: Please note plans are indicative only and not drawn to exact scale. All dimensions are approximate. Potential buyers should satisfy themselves of any pertinent matters.