



16/101 Leveson Street North Melbourne VIC

3  2  2 

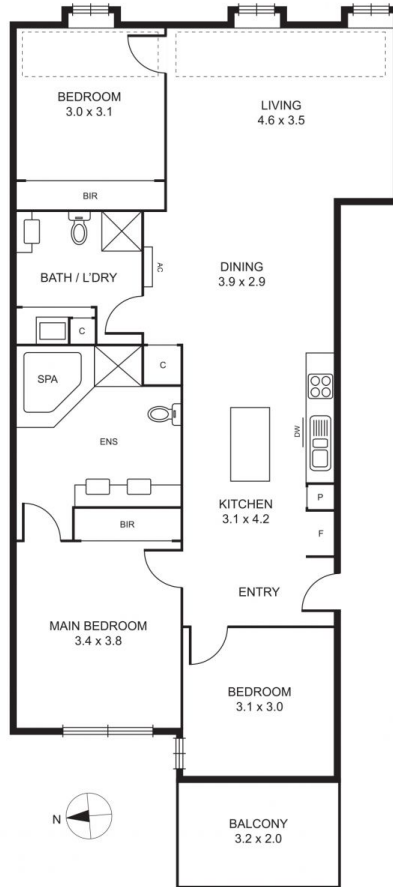
Showcasing a brilliant fusion of contemporary style, generous dimensions and evocative warehouse origins, this remarkable three bedroom, two bathroom apartment delivers unparalleled ambience and city convenience.

Impressively designed interiors offer a wonderful outlook towards the CBD with a large open plan living/dining area featuring a soaring glass ceiling. Adjacent the gourmet kitchen boasts Smeg appliances, stone island and pull-out pantry. All complemented by master bedroom with deluxe ensuite, two more bedrooms enjoy lovely views, one extends onto a private balcony. Highlights include second bathroom/laundry, BIRs, split-system air conditioner, timber floors, secure undercover parking, lift, intercom and foyer entry. While established and well-maintained common areas include leafy central courtyard garden.

Building Size : 150 sqm
View : <https://www.alexkarbon.com.au/lease/vic/inner-city/north-melbourne/residential/apartment/7439489>



Sharon Hibberd
03 9326 8883



Disclaimer: Please note plans are indicative only and not drawn to exact scale. All dimensions are approximate. Interested parties should satisfy themselves of any pertinent matters.