



1202/610 St Kilda Road Melbourne VIC

2 1 1

Sensationally located for the ultimate lifestyle experience, this large two bedroom apartment offers fantastic living space, parkland vistas and breathtaking bay views from a wide alfresco balcony. Step through to discover a spacious open living area, incorporating dining and study zones, featuring iconic views. An adjacent kitchen is fully equipped with quality appliances, dishwasher and plentiful storage. Further highlights include two comfortable bedrooms, with built-in-robos, pristine bathroom/European laundry and split-system air conditioner. Plus, residents enjoy access to an on-site gym. Fully secure with intercom, foyer and lift entry, along with an undercover car space/storage cage with remote controlled access from Queens Lane. This serene and secure apartment is superbly positioned close to Albert Park Lake walking trails, trendy cafés, shops, bayside beaches, Wesley College, Alfred Hospital, trams and the CBD.

Price : \$ 560,000

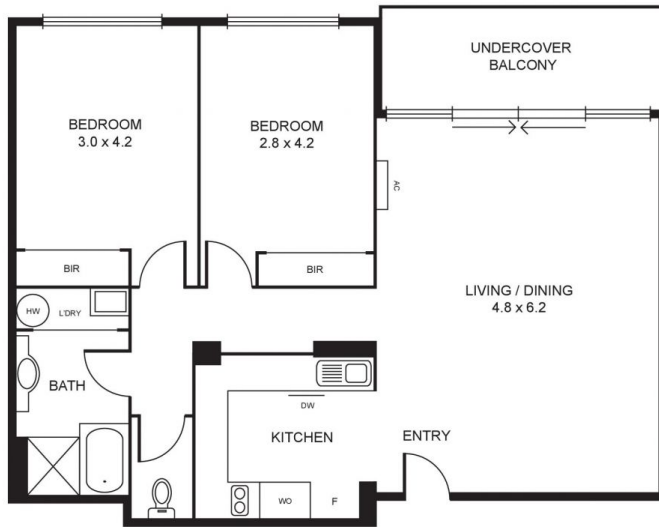
View : <https://www.alexkarbon.com.au/sale/vic/inner-city/melbourne/residential/apartment/7219917>



Charles Bongiovanni
03 9326 8883



Rebecca Smith
03 9326 8883



STORAGE CAGE
(NOT TO SCALE)

