



216/275 Abbotsford Street North Melbourne VIC

2 🛏 2 🚿 1 🚗

Located within the deluxe surrounds of the PDG Arden Park boutique development, this is no ordinary two-bedroom apartment. Contemporary flair and clever design are showcased by beautifully curated open plan living, dining and kitchen spaces and cohesive finishes throughout.

The apartment features:

- ? High-quality finished kitchen with Smeg appliances, two large pantries and white stone counter tops.
- ? Two generous double bedrooms serviced by fitted mirrored built-in-robos with the main bedroom featuring an ensuite.
- ? Two chic modern bathrooms, with large walk-in rainfall showers, stone top vanities and storage.
- ? European laundry, concealed air conditioner, double glazed windows and covered balcony.

Price : \$ 738,000

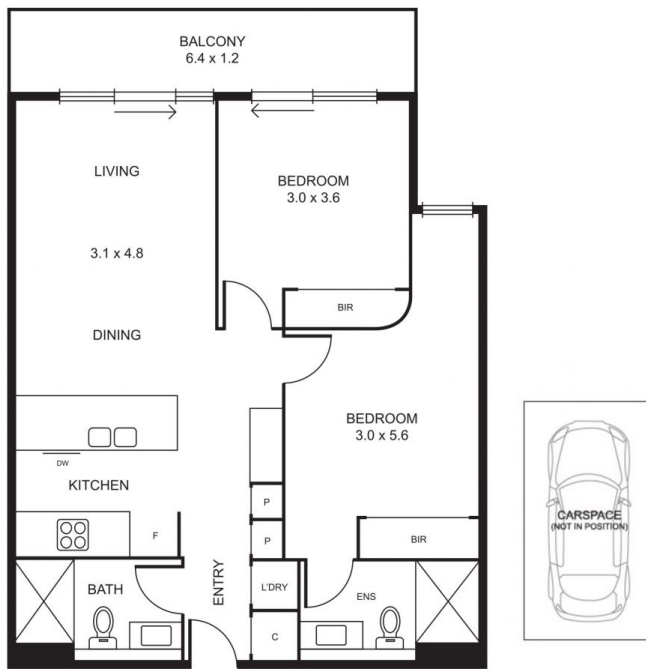
View : <https://www.alexkarbon.com.au/sale/vic/inner-city/north-melbourne/residential/apartment/6833092>



Alex Puglia
03 9326 8883



Charles Bongiovanni
03 9326 8883



Disclaimer: Please note plans are indicative only and not drawn to exact scale. All dimensions are approximate. Potential buyers should satisfy themselves of any pertinent matters.