



11 Erskine Place North Melbourne VIC

2 1 1

Located in a secluded laneway on prestigious Hotham Hill sits this contemporary two-bedroom, double-storey townhouse presents low-maintenance upkeep, quality finishes throughout and leafy garden serenity to starters, professionals and investors alike. Nestled in a boutique complex of only four and integrating a clever reverse open plan; high ceilings alongside natural northerly sunlight create a spacious and inviting ambience inside the living domain. Cooking at home is easy with the stylish stone-bench kitchen well-appointed in premium electric cooking appliances, stainless-steel dishwasher, heightened breakfast bar and plentiful cabinetry, as the versatile meals/family zone leads to the entertaining balcony terrace.

Each restful bedroom showcases electric heating panels and glass sliding doors that open to a lush garden courtyard offering tranquillity, while the intelligently placed bathroom comprises dual access. The master

Price : \$ 1,060,000

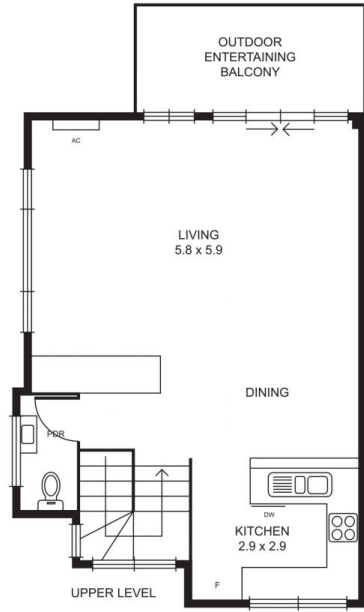
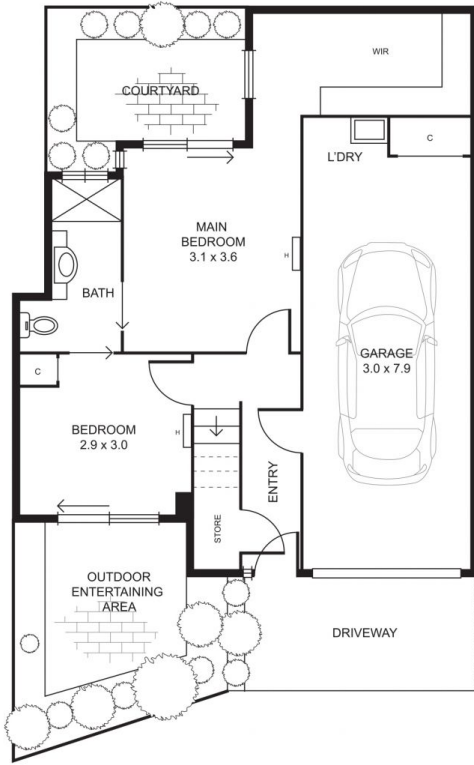
View : <https://www.alexkarbon.com.au/sale/vic/inner-city/north-melbourne/residential/house/6820902>



Charles Bongiovanni
03 9326 8883



Rebecca Smith
03 9326 8883



Disclaimer: Please note plans are indicative only and not drawn to exact scale. All dimensions are approximate. Potential buyers should satisfy themselves of any pertinent matters.