



Level 3/305/668 Bourke Street Melbourne VIC

2 1 1

Please note that in accordance with the government directive, any person wishing to inspect our rental properties must be fully vaccinated. Please register your interest online and receive automatic updates of inspection times when they become available.

View : <https://www.alexkarbon.com.au/lease/vic/inner-city/melbourne/residential/apartment/6719214>

In an unbeatable location, this unfurnished two-bedroom apartment is sure to impress with its close proximity to tram lines, Southern Cross station, supermarkets, Marvel Stadium and cafes/restaurants within the CBD plus so much more.

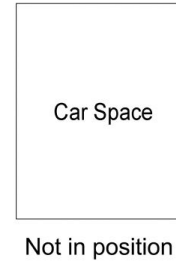
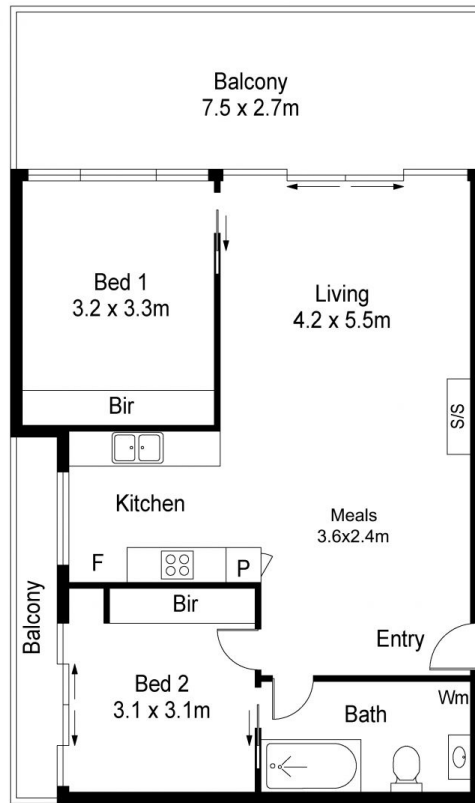


Tasma Bogdanovic
03 9326 8883



Nancy Yang æ••â†•â°-
9326 8883

Accommodation: This bright 3rd floor apartment with north facing windows comprises a spacious open plan lounge/dining area with floating floorboards and brand-new reverse-cycle heating and cooling, further leading to a large outdoor balcony/courtyard with direct access to the level 3



Scale in metres. Indicative only. Dimensions are approximate. All information contained herein is gathered from sources we believe to be reliable. However we cannot guarantee its accuracy and interested persons should rely on their own enquiries



305/668 Bourke Street, Melbourne