



605/35 Dryburgh Street West Melbourne VIC

2 2 1

Inspections are by PRIVATE APPOINTMENT and only permitted for people from the same household. Please contact the agent to book an inspection and to register your interest.

Perfectly positioned at the top level, take advantage of an easy low maintenance inner-city lifestyle, this fabulous apartment is very unique in more ways than one. Only minutes walk from the North Melbourne station, walking distance to Errol Street and a variety of cafes, bars and eateries.

Extensive outdoor space. This oversized sun-drenched terrace enjoys a north-west aspect for all-day sun and will be the ideal place for care-free alfresco entertaining with amazing sunsets.

Price : \$ 740,000
Building Size : 79.8 sqm
View : <https://www.alexkarbon.com.au/sale/vic/inner-city/west-melbourne/residential/apartment/6438102>



Charles Bongiovanni
03 9326 8883



Rebecca Smith
03 9326 8883

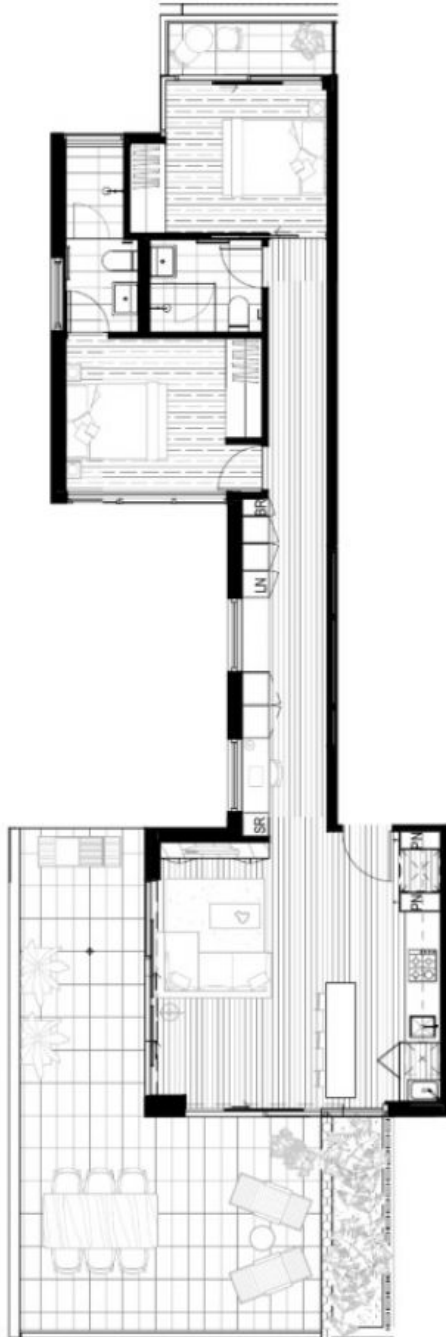
The Wallace

35 DRYBURGH STREET
WEST MELBOURNE

LEVELS

6
APARTMENTS
6.05

BEDROOM 2
BATHROOM 2
STUDY 1
CARPARK 1
INTERNAL 79.8sqm
EXTERNAL 44.6sqm
TOTAL 124.4sqm



Please note that this floor plan is illustrative prior to completion of construction and is indicative only and not to scale. Changes may be made during development and dimensions, site layout, areas, fittings, finishes and specifications are subject to change without notice in accordance with the provisions of the Contract of Sale. The furniture depicted is not included with any sale and should not be taken to indicate the final position of power points, TV aerial fix points and the like. Prospective purchasers must rely on their own enquiries. Builders liability for services and structures are not depicted. A survey is required in accordance with the Property Council Method of Measurement for residential property.