



**43 Mountain Street South Melbourne VIC**

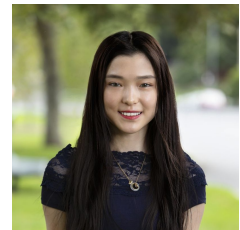
2 1

**View** : <https://www.alexkarbon.com.au/lease/vic/inner-city/south-melbourne/residential/house/6352164>

Period charm, stylish modern function and a prime position create an excellent inner city lifestyle solution in this smartly renovated Victorian close to St Vincent Gardens, South Melbourne Market, trams and Bridport Street Village. Nestled within a wide traditional streetscape, an arched hallway links two inviting double bedrooms, both boasting open fireplaces and the convenience of built in robes, to a beautifully bright sitting room appreciating an open fire, built in storage and an internal light courtyard ideal for drawing the afternoon breeze. At the rear, a chic fully tiled bathroom accompanies a wonderfully fresh and crisp kitchen of impressive proportions enjoying gas cooking, bar style dining and the entertaining possibilities of a sunny private courtyard with pedestrian access via Little Boundary Street. With fashionable timber floors, high ceilings and loads of personality.

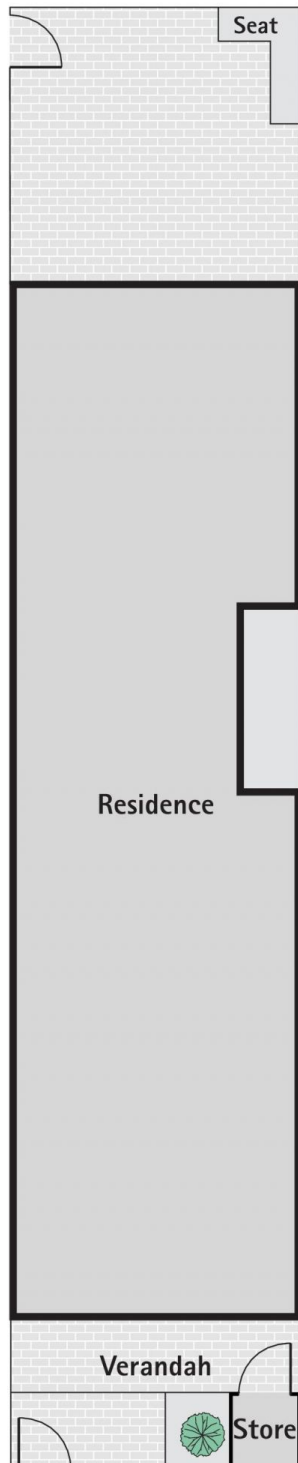


**Tasma Bogdanovic**  
03 9326 8883



**Nancy Yang** æ•°â†‡â°  
9326 8883

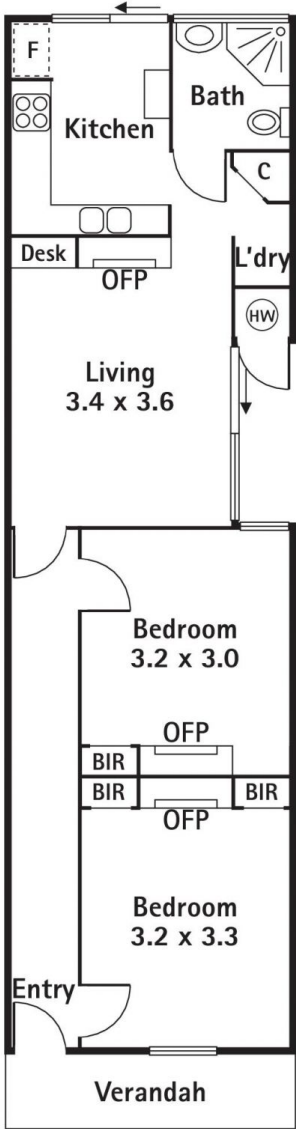
# 43 Mountain Street, SOUTH MELBOURNE



Every care has been taken to verify the accuracy of details in this brochure. All measurements are approximate and prospective purchasers are requested to take such action as is necessary to satisfy themselves of any pertinent matters.

Not to scale

# 43 Mountain Street, SOUTH MELBOURNE



Every care has been taken to verify the accuracy of details in this brochure. All measurements are approximate and prospective purchasers are requested to take such action as is necessary to satisfy themselves of any pertinent matters.

Not to scale