



2D Thompson Street Kensington VIC

3 3 1

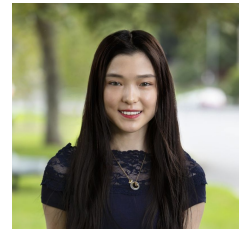
Designed with light, privacy and security in mind, this boutique Townhouse includes vast living spaces, al fresco entertaining areas and flexible floor plans.

View : <https://www.alexkarbon.com.au/lease/vic/north/kenington/residential/townhouse/6280375>

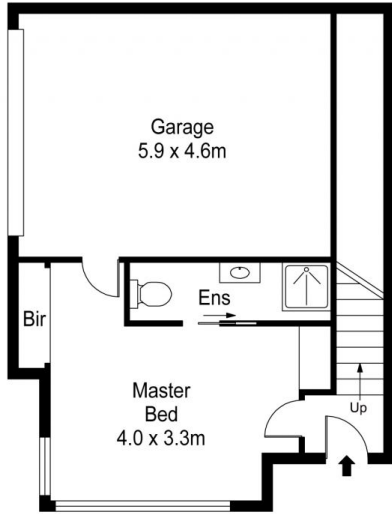
Living areas open to state-of-the-art kitchens, set over three levels and including private-entry garages, the floor plans are flexible to three bedroom layouts with additional separate study zones luxuriously appointed main bathrooms and ensuites. The design offers the option of using one of the ground floor rooms as a spacious home office or second living room. Covered balconies provide clear CBD views, excellent cross-flow ventilation and an inviting indoor/outdoor ambience.



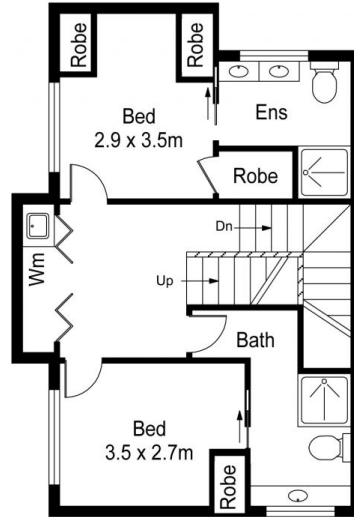
Tasma Bogdanovic
03 9326 8883



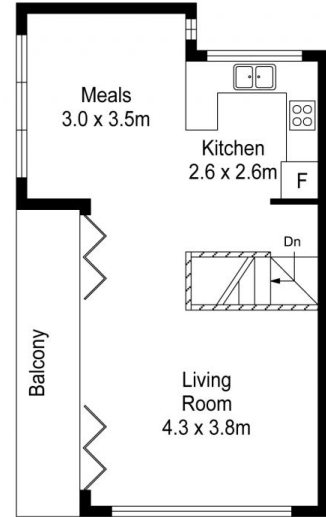
Nancy Yang æ•°à¶å°-
9326 8883



GROUND FLOOR



FIRST FLOOR



SECOND FLOOR



Scale in metres. Indicative only. Dimensions are approximate. All information contained herein is gathered from sources we believe to be reliable. However we cannot guarantee its accuracy and interested persons should rely on their own enquiries



2D Thompson Street, Kensington