

405/187 Boundary Road North Melbourne VIC

1 1 1

Located in the distinctive Serra Apartments complex, this fourth level residence offers spacious living in a prime city-edge location.

- Vacant Possession
- Above 50 m2 internal living area
- Approx 8 m2 terrace
- Open-plan living/dining area
- Stone-top kitchen and stainless steel appliances.
- Split-system heating/cooling and double glazed windows
- European laundry
- Lower level 1 car space
- Lower Level storage cage
- Video intercom/secure entry foyer
- Lift access
- Walk to Flemington Bridge Station and Racecourse Road trams, Royal Park

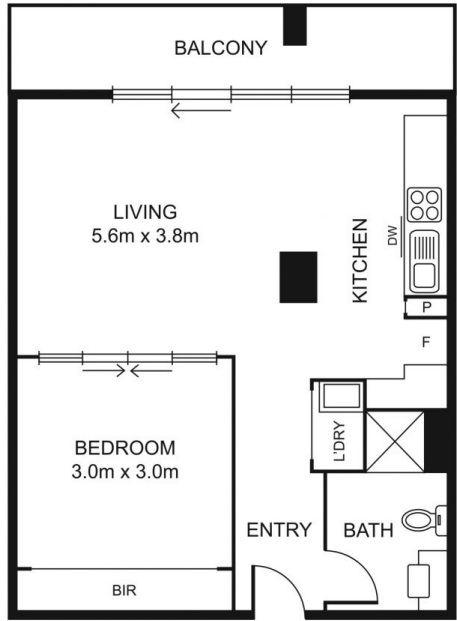
Building Size : 52 sqm
View : <https://www.alexkarbon.com.au/sale/vic/inner-city/north-melbourne/residential/apartment/6258311>



Charles Bongiovanni
03 9326 8883



Gianni Fazzari
03 9326 8883



Disclaimer: Please note plans are indicative only and not drawn to exact scale. All dimensions are approximate. Potential buyers should satisfy themselves of any pertinent matters.