



189 Heath Street Port Melbourne VIC

3 1 1

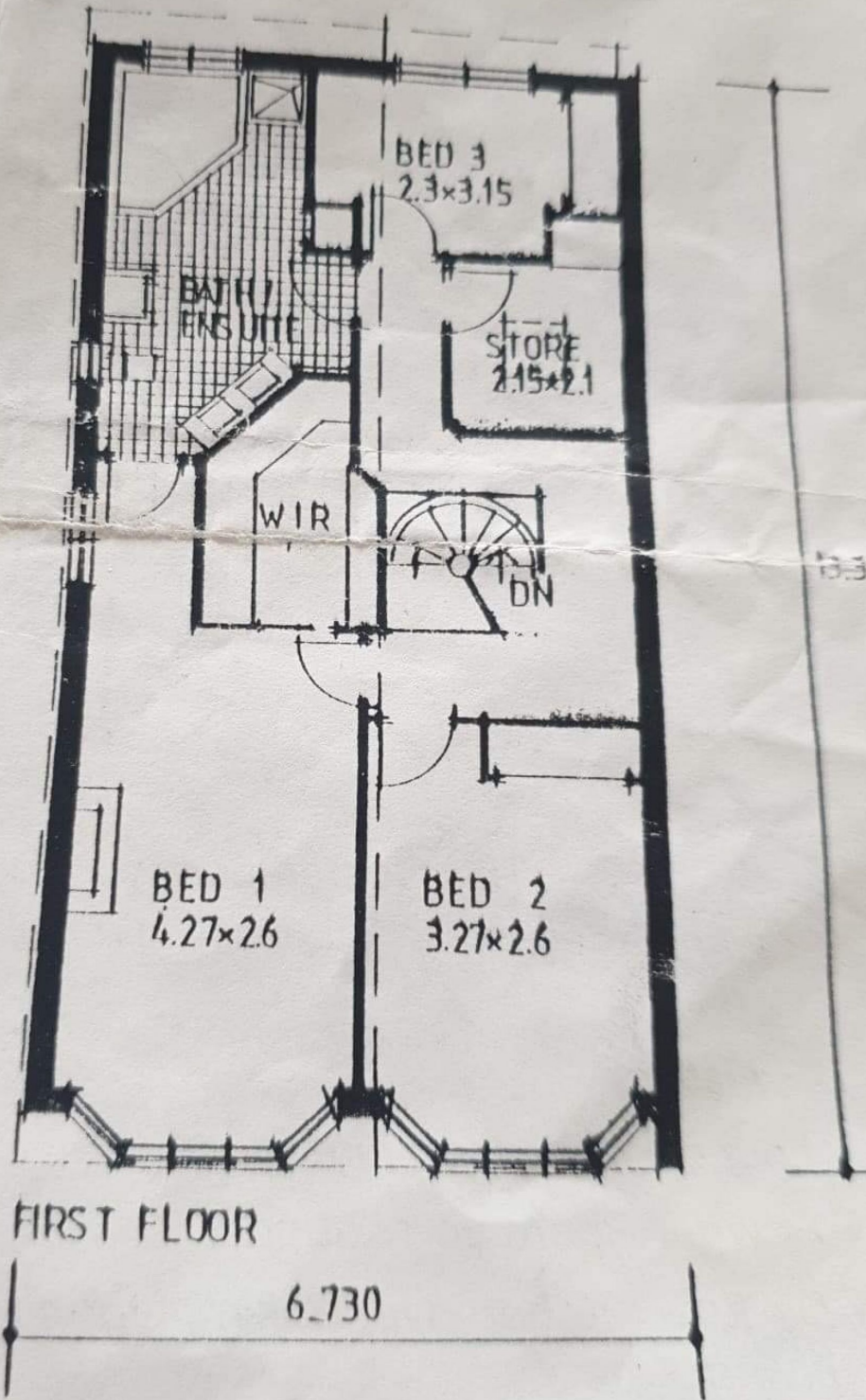
This double storey residence's enduring appeal is defined by its impressive proportions and unbeatable location moments from Bay Street's restaurants and shops, the light rail, parks, schools and the beach. A superbly proportioned sitting room / lounge/ dining room you will then enter the well appointed light filled kitchen which opens to a private courtyard. The spacious main bedroom with walk in robe and two way en suite/bathroom is upstairs alongside the 2 bedrooms with built in robes and a separate study. it also includes a second powder-room, laundry, garden shed and off street parking.

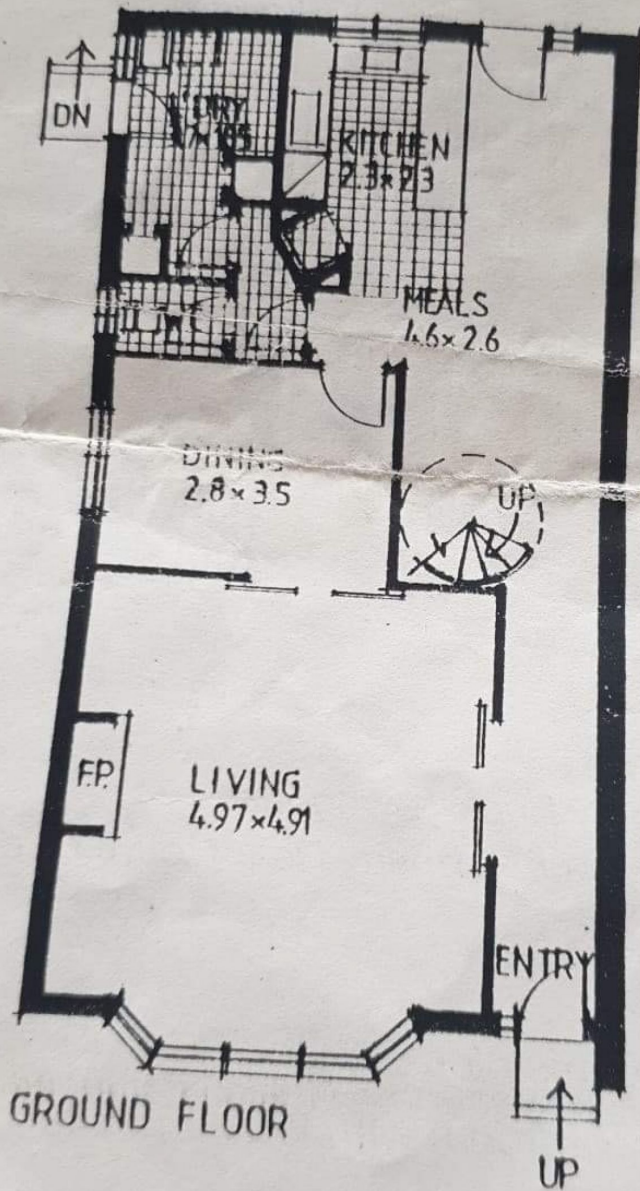
View : <https://www.alexkarbon.com.au/lease/vic/inner-city/port-melbourne/residential/house/6209825>



Tasma Bogdanovic
03 9326 8883

- This property also features
- ? Ducted heating
 - ? Split System cooling
 - ? Ducted Vacuum maid
 - ? Spa bath





AREAS:

DWELLING

$$89.64 \text{ sq.m.} \times (2) = 179.28 \text{ sq.m.}$$

$$= 19.30 \text{ sq}$$