

**6/82 Richardson Street Essendon VIC**

2 2 1

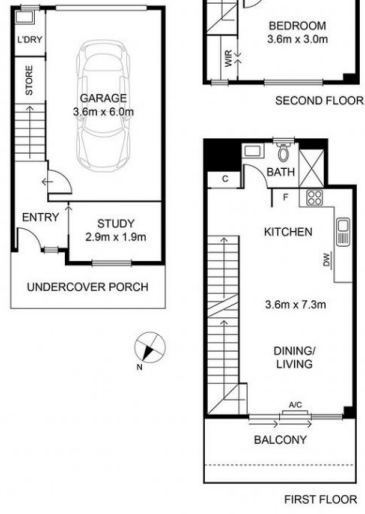
This as-new townhouse delivers an idyllic modern lifestyle with its versatile design, private surrounds and instant access to the best of North Essendon Village. Impressive interior showcases two generous bedrooms (both with built-in robes) and two full bathrooms, dedicated study/home office, light-filled open living/dining area leading out to a sunny north-facing terrace. Add to this a stone-top kitchen with soft-close drawers and stainless steel appliances, split-system heating and cooling, additional panel heaters (bedrooms), hardwood floors, LED lighting, plus under-stair storage and European laundry, remote-control garage with internal entry. Lincoln Park across the road, it also offers instant access to cafes and restaurants, shops and supermarkets, Mt Alexander Road trams, as well as close proximity to primary and secondary schools, Essendon Station, airports and CBD via freeway/Citylink. Perfect low-maintenance living or

**View :** <https://www.alexkarbon.com.au/lease/vic/north/essendon/residential/townhouse/6209815>



**Tasma Bogdanovic**  
03 9326 8883

6/82 RICHARDSON STREET, ESSENDON



Disclaimer: Please note plans are indicative only and not drawn to exact scale. All dimensions are approximate. Potential buyers should satisfy themselves of any pertinent matters.