



3/26 Sandown Road Ascot Vale VIC

2 1 1

Luxurious dimensions, inclusions and a coveted location combine to create the utmost in easy modern living with this contemporary designed two bedroom residence. In a boutique block, its crowning glory is a sun-filled terrace leading onto the open plan living/dining spaces and equipped with Miele kitchen appliances showcasing Quantus Quartz Ash grey stone benches and abundant storage options. Spanning over two levels both bedrooms include built-in-ropes and a central bathroom. Additional highlights comprise separate bathrooms/stone vanities, separate laundry lots of storage, split-system units, secure entry, private terrace. With automated access to a secure basement car park plus storage on title. Walking distance to Flemington Racecourse, Melbourne Showgrounds Village and train station with excellent access to vibrant Union Road cafés, Docklands precinct plus university and hospital districts further enhances an executive choice,

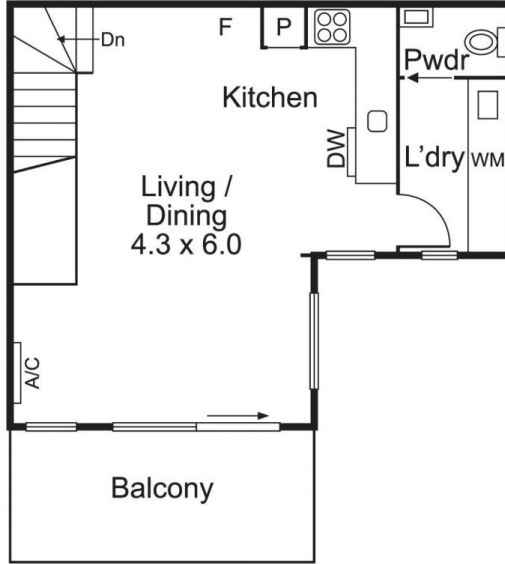
View : <https://www.alexkarbon.com.au/sale/vic/north/ascot-vale/residential/townhouse/6209755>



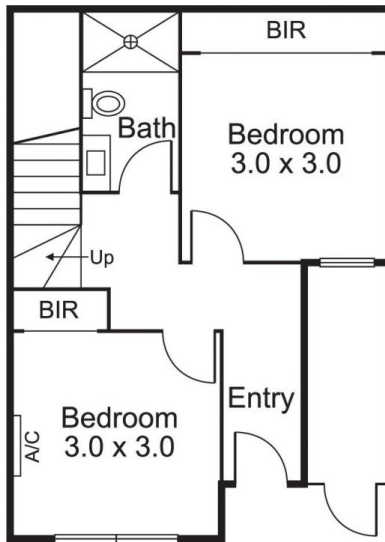
Alex Puglia
03 9326 8883



Thomas Cutajar
9326 8883



FIRST FLOOR



GROUND FLOOR



Total Internal Area: 7.75 Squares / 72 sqm (Approx.)

Every care has been taken to verify the accuracy of the net internal area. Prospective purchasers are advised to make their own enquiries to satisfy themselves in all respects.