





**3901/45 Clarke Street Southbank VIC**

2  2  1 

Rent is Negotiable on this perfectly situated two bedroom, two bathroom apartment will not disappoint. Located in the Platinum building, with its open plan kitchen and living, split system heating and cooling. This apartment is situated on the 39th Floor so the view will not disappoint. Built in robes in both bedrooms, luxury stainless steel appliances throughout.

**View** : <https://www.alexkarbon.com.au/lease/vic/inner-city/southbank/residential/apartment/6209660>

The platinum Tower has one of the largest vertical gardens in the world, with top class amenities, This includes a gym, sauna, sky lounge, swimming pool and 24 hour concierge, all located on the 52nd floor.



**Tasma Bogdanovic**  
03 9326 8883

Located in the heart of the Crown Precinct, close to the Arts Centre, Eureka Tower and fine selection of restaurants, bar, cafes and nightclubs. The CBD is only a short walk away. Don't miss out as it won't last long.

# PLATINUM

263 City Road, Southbank

**TYPE A3**      **A01**  
2 bedroom & 2 bathroom

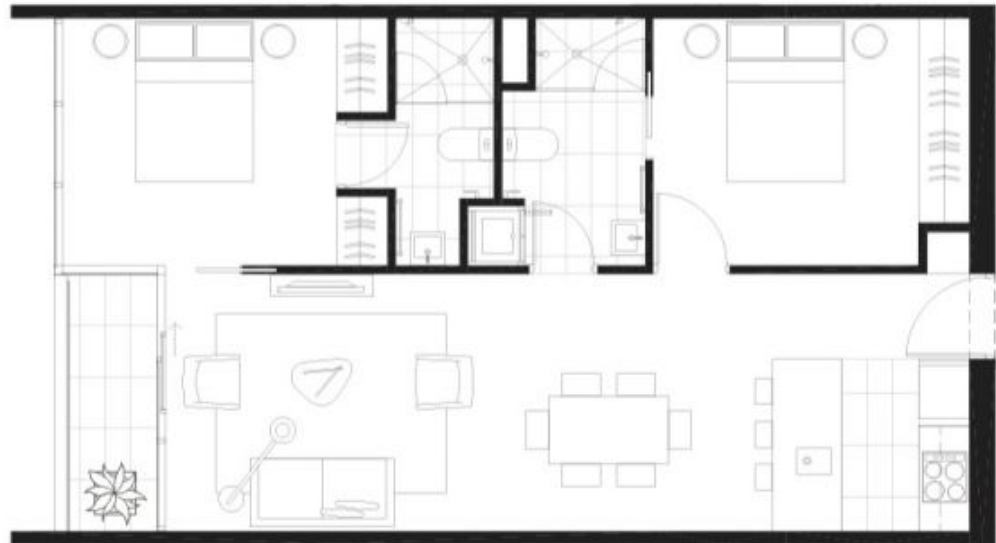
Total Apartment:      69.3m<sup>2</sup>  
745.9ft<sup>2</sup>

Aspect:      City  
Level:      36 - 39

KEYPLAN



Level 36 - 39



**SALVO** PROPERTY      **squillace**

Dimensions and areas are approximate and are subject to change without notice. Internal measurements are taken from centreline of party walls, external face of corridors and the external face of the outside walls. Prospective purchasers must rely on their own enquiries and should refer to Annexure 4 Drawings and Specifications of the Contract of Sale. Loose furniture, whitegoods and plants are not included. The type of floor finishes and the area to which floor finishes are applied may vary.