



6/11 Sandown Road Ascot Vale VIC

3 2 2

In a boutique development of only 6 homes and set over two levels is this stylish townhouse consisting three bedrooms with BIR, master with en-suite, huge open plan living/dining spaces flooded with natural light, and a chef's kitchen with plenty of cupboard and bench space. Further complimented with heating and cooling throughout, solid timber floor boards and a secure double lock up garage with internal access. Ideally located within close proximity to the Flemington Racecourse, Royal Melbourne Show grounds, the abundance of shops and cafes along Union Road and close to public transport, schools and parkland and a short distance to the CBD.

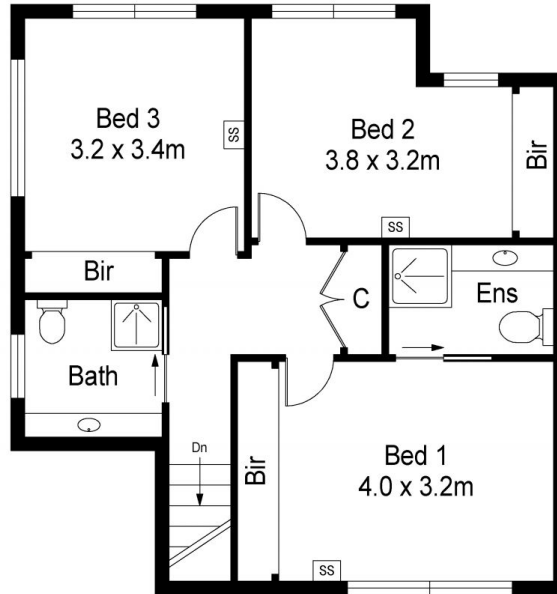
View : <https://www.alexkarbon.com.au/lease/vic/north/as-cot-vale/residential/townhouse/6209614>



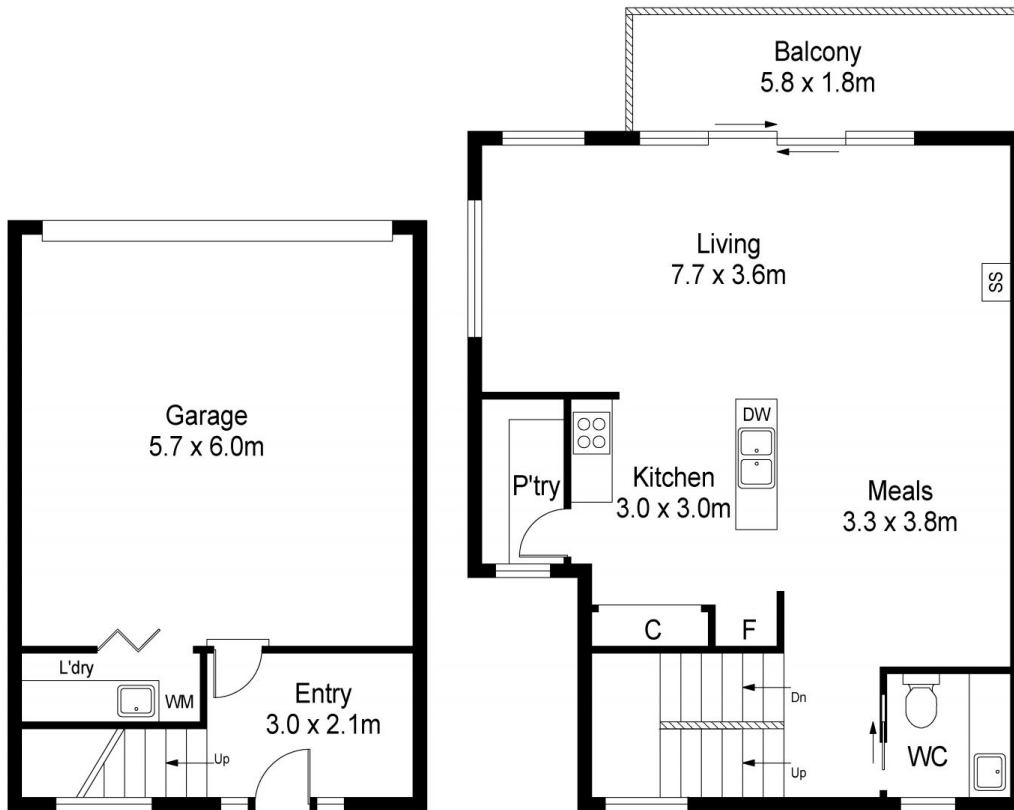
Tasma Bogdanovic
03 9326 8883



Nancy Yang æ•ˆˆâ†•âˆ•
9326 8883



Second Floor



Ground Floor

First Floor



Scale in metres. Indicative only. Dimensions are approximate. All information contained herein is gathered from sources we believe to be reliable. However we cannot guarantee its accuracy and interested persons should rely on their own enquiries



6/11 Sandown Road, Ascot Vale