






3/24 Park Street Moonee Ponds VIC

2  2  1 

Delivering a dynamic city fringe lifestyle is this architecturally designed two bedroom, two bathroom boutique townhouse prestigiously located near Queens Park. Inviting dimensions include sophisticated open plan living/dining zones featuring vaulted ceilings and seamless access onto an alfresco terrace. Projecting a sense of style is an ultra-chic kitchen displaying Miele appliances, fully concealed refrigerator/freezer/dishwasher, stone benches and abundant cabinetry. Highlights include well scaled bedrooms/BIRS, modern bathrooms/powder room, intimate courtyard, study nook, secure entry/intercom, split-systems, European laundry and automated garage/direct internal entry. Within a short walk from Puckle Street cafés, restaurants, shops, Moonee Ponds station and private schools, its appeal is undeniable.

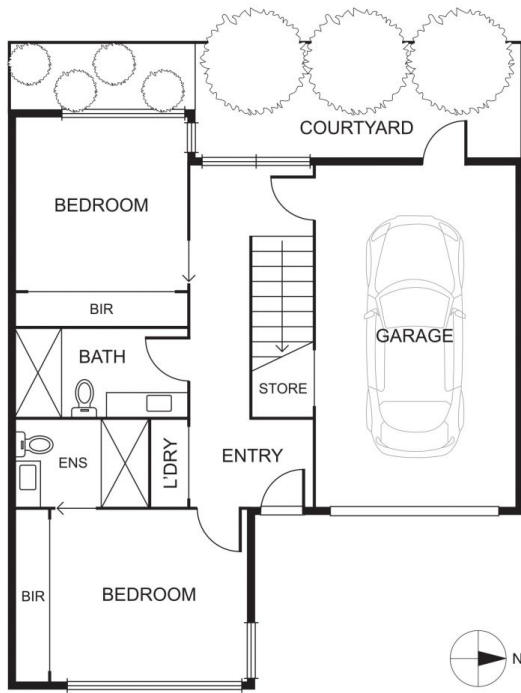
Price : \$ 835,000

View : <https://www.alexkarbon.com.au/sale/vic/north/moonee-ponds/residential/townhouse/6209184>



Charles Bongiovanni
03 9326 8883

Alexkarbon Real Estate



UPPER LEVEL

Disclaimer: Please note plans are indicative only and not drawn to exact scale. All dimensions are approximate. Potential buyers should satisfy themselves of any pertinent matters.