




**1/100 Pascoe Vale Road Moonee Ponds VIC**

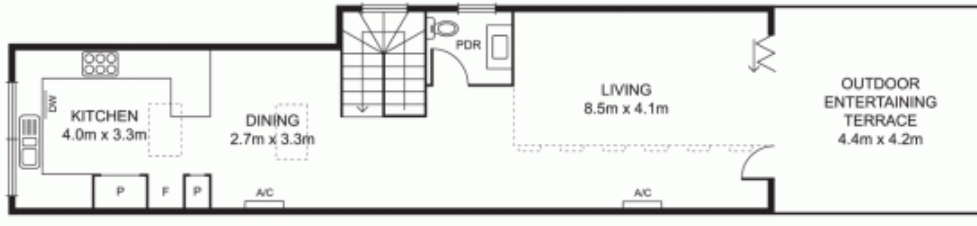
3  2  2 

From an exclusive Moonee Ponds address, directly opposite entrancing Queens Park, to the architect influenced interiors, this ultra-stylish three bedroom, two bathroom residence is an outstanding modern package. Certain to impress, an expansive, elevated open plan living domain features captivating views of Queens Park Lake, raked ceilings and glass stackers unfolding onto a private sun drenched terrace. While outside an in-ground, heated plunge pool/spa ensures delight. Awash with natural light, the kitchen displays quality stone counters, 900mm Smeg cooker, dishwasher and excellent storage. Complemented by well scaled bedrooms, WIR/BIRS, fully tiled bathrooms, powder room, under stair storage, ducted heating, split-systems, double-glazing, alarm, automated double garaging with further carparking available and ROW. Seconds to city trams, buses, great cafés and swimming centre, with St Monica's primary, renowned public/private

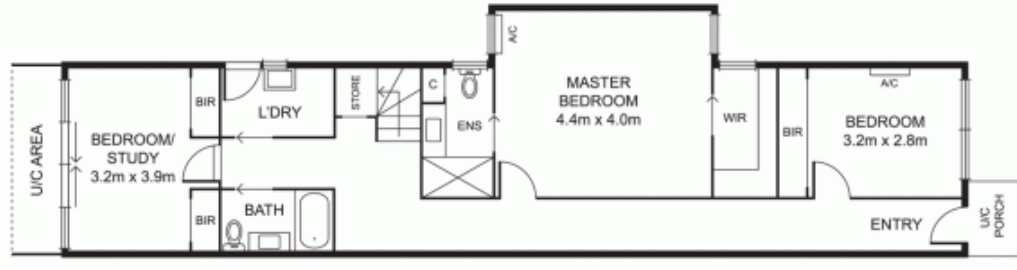
**Price** : \$ 1,035,000  
**View** : <https://www.alexkarbon.com.au/sale/vic/north/moonee-ponds/residential/townhouse/6209099>



**Charles Bongiovanni**  
**03 9326 8883**



UPPER LEVEL



Disclaimer: Please note plans are indicative only and not drawn to exact scale. All dimensions are approximate. Potential buyers should satisfy themselves of any pertinent matters.