



**Level 2/203/316 Pascoe Vale Road Essendon VIC**

2 2 1

A genuine urban retreat, Esse brings style, sophistication and contemporary living to this heartland of green spaces, heritage and city life. Become a part of a vibrant, growing community. The exceptional attention to detail and quality appointments are a feature at Esse Apartments as they are finished with stone bench tops, solid cabinetry and tactile flooring options. Close to transport, parkland and shopping and only approx. 9 km to the CBD. Features:

- Air Conditioning
- Heating
- Built-In Wardrobes
- Close to Schools
- Close to Transport
- Intercom
- Basement Car Parking
- Storage cage

**View** : <https://www.alexkarbon.com.au/lease/vic/north/essendon/residential/apartment/6208954>

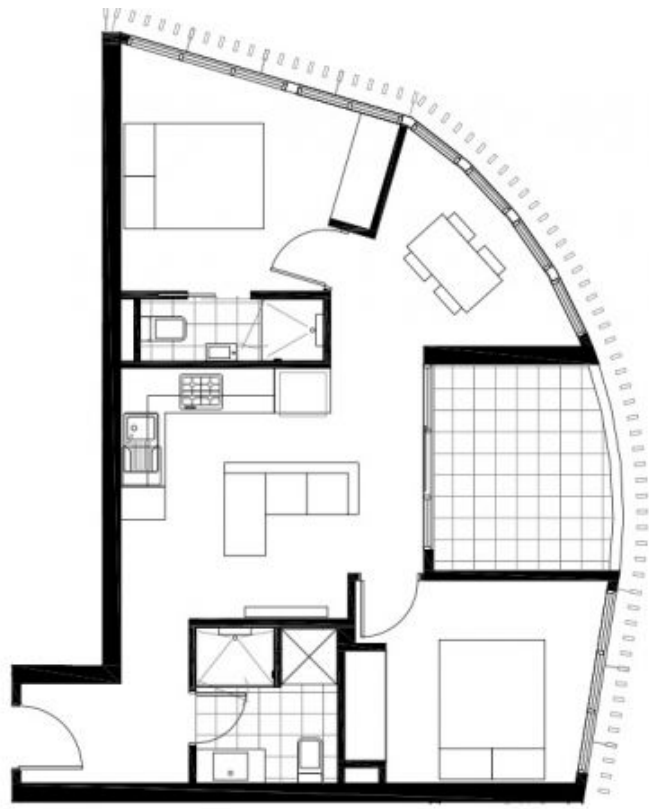


**Tasma Bogdanovic**  
03 9326 8883

# 2.03

TOTAL AREA : 72 m<sup>2</sup>  
APARTMENT AREA : 64 m<sup>2</sup>  
BALCONY AREA : 8 m<sup>2</sup>

N<sub>o.</sub> OF BEDROOMS : 2  
N<sub>o.</sub> OF BATHROOMS : 2  
CARSPACES : 1



DISCLAIMER  
THE PLANS, MEASUREMENTS AND INFORMATION CONTAINED IN THIS DOCUMENT ARE PROVIDED AS A GUIDE ONLY AND ARE NOT INTENDED TO BE USED FOR CONSTRUCTION. INFORMATION CONTAINED IN THIS DOCUMENT IS SUBJECT TO CHANGE WITHOUT NOTICE. THE INFORMATION IS SUBJECT TO CHANGE WITHOUT NOTICE AND SHALL BE SUBJECT TO THE TERMS AND CONDITIONS OF THE CONTRACT OF SALE. ANY PURCHASER SHOULD CONSULT A QUALIFIED PROFESSIONAL ADVISOR FOR FURTHER INFORMATION. ALL MEASUREMENTS ARE CALCULATED BASED ON THE PROPERTY CEILING OF AUSTRALIA METHOD OF MEASUREMENT FOR RESIDENTIAL PROPERTY. PURCHASERS SHOULD HAVE PROFESSIONAL SURVEYORS REFERENCED TO THE PROJECT'S TITLE.