



5/9 Sandown Road Ascot Vale VIC

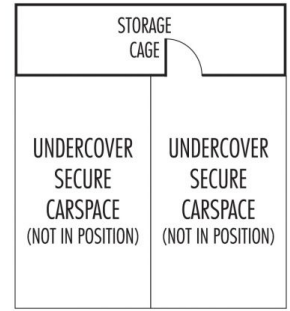
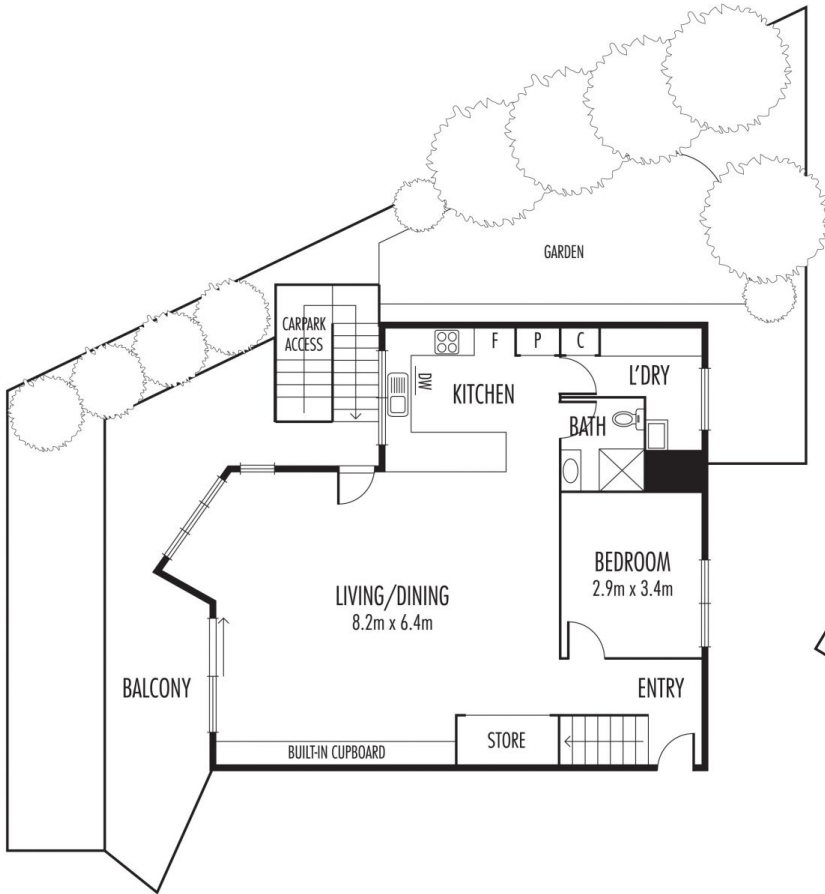
4 3 2

Superior space, inclusions and coveted city fringe address, near Flemington Racecourse, Showgrounds Village and the CBD, are just the tip of what this brilliantly located four bedroom, three bathroom residence has to offer. Ideally positioned at the rear of an architecturally inspired, boutique complex of only five, it features a wrap around alfresco terrace, linked to a huge open plan living domain by French doors, and an idyllic, private rear courtyard surrounded by lush greenery. Showcasing stainless steel Smeg appliances, Fisher and Paykel dual-drawer dishwasher, vibrant splashbacks and two tone cabinetry, framed by thick stone benchtops, including servery with waterfall edge, the kitchen is well equipped for refined dining and entertaining. A generous layout offers four bedrooms, three are particularly spacious and include either built-in or walk-in robe. The main boasts intimate balcony and lavish ensuite. Servicing secondary bedrooms

View : <https://www.alexkarbon.com.au/lease/vic/north/ascot-vale/residential/townhouse/6208822>



Tasma Bogdanovic
03 9326 8883



Disclaimer: Please note plans are indicative only and not drawn to exact scale. All dimensions are approximate. Potential buyers should satisfy themselves of any pertinent matters.