



27/15 Moore Street Moonee Ponds VIC

2 2 1

Walk to shops and cafes of Puckle Street, with Moonee Ponds station literally at your doorstep. This exceptionally appointed contemporary apartment re-defines the meaning of 'conveniently situated'. Including a good sized living area overlooking spectacular views, sparking kitchen with smeg appliances, main bedroom with separate access to balcony. Features include the following:

- Bedrooms both with built in robes
- Two separate bathrooms
- Designer kitchen
- Heating/cooling
- Secure off street car park and storage cage.
- Entertainers balcony with breathtaking views
- Huge Communal Roof Top Terrace

View : <https://www.alexkarbon.com.au/lease/vic/north/moonee-ponds/residential/apartment/6208815>

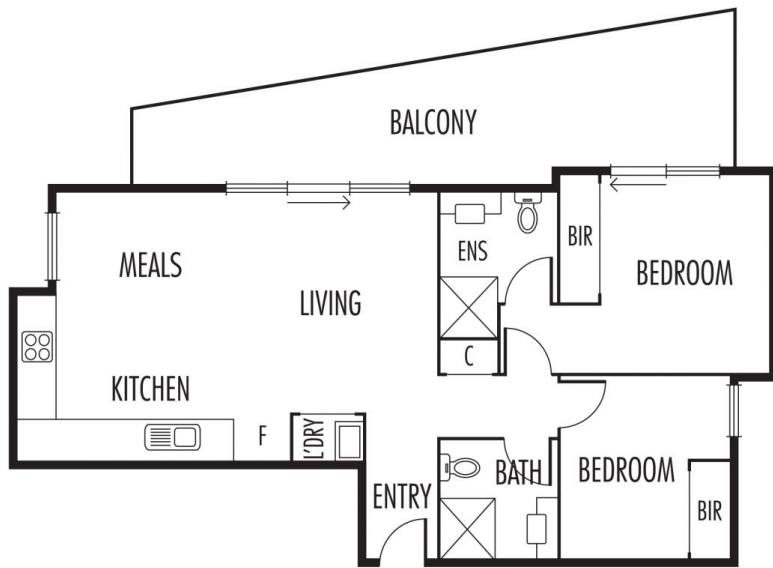


Gianni Fazzari
03 9326 8883



Tasma Bogdanovic
03 9326 8883

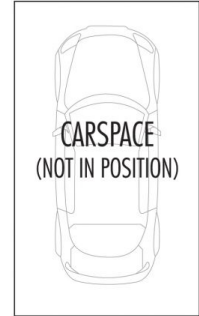
Walking distance to Mt Alexander Road trams, supermarkets, and a short stroll to Queens Park and



STORAGE
CAGE



(NOT IN POSITION
NOT TO SCALE)



Disclaimer: Please note plans are indicative only and not drawn to exact scale. All dimensions are approximate. Potential buyers should satisfy themselves of any pertinent matters.