



115 Abbotsford Street WEST MELBOURNE VIC

3 3 2

Sleek and spacious, this four storey, three bedroom, three bathroom townhouse is nothing short of a design triumph with its architecturally refined spaces, contemporary appointments and superb vicinity to the CBD and Docklands.

Lined with polished hardwood floors and serviced by a stunning gourmet kitchen boasting Miele appliances and stone counters, generous indoor living areas extend outwards to entertaining balconies delivering magnificent views spanning the city skyline, Bolte Bridge and Melbourne Star Observation Wheel.

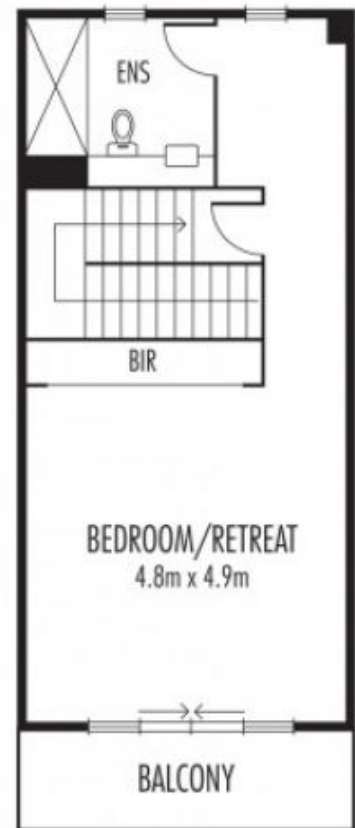
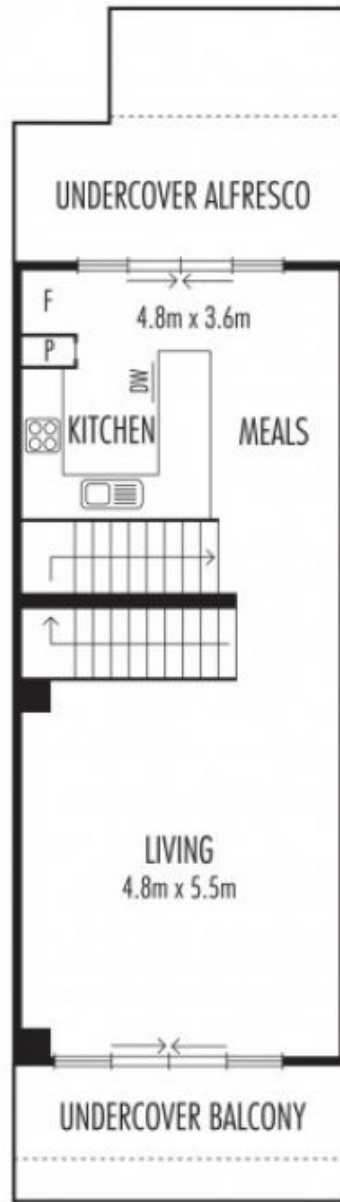
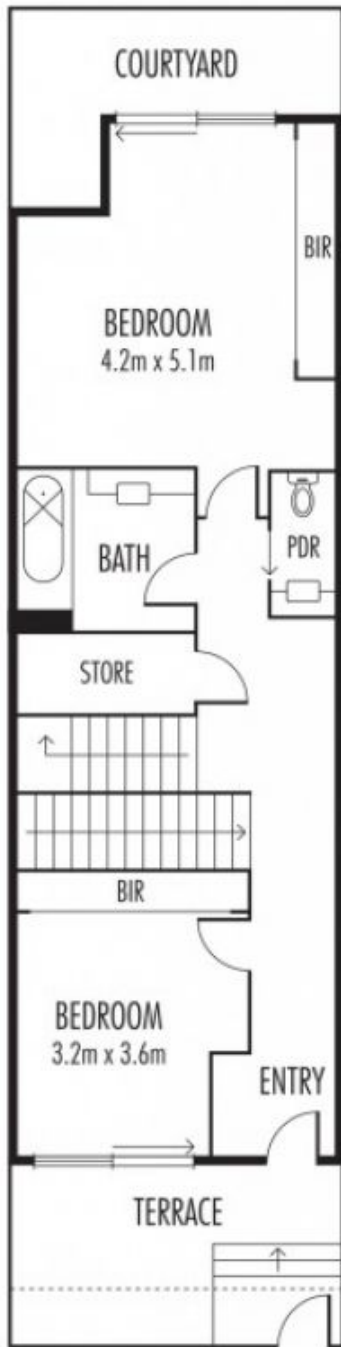
Three large bedrooms are enhanced with his-and-hers built-in wardrobes and private outdoor areas.

Ground floor bedrooms share chic stone-topped vanity powder and central bathrooms and proceed to their own courtyards, whilst the top floor houses the master retreat, complete with private bathroom and a large balcony

View : <https://www.alexkarbon.com.au/sale/vic/inner-city/west-melbourne/residential/townhouse/6208583>

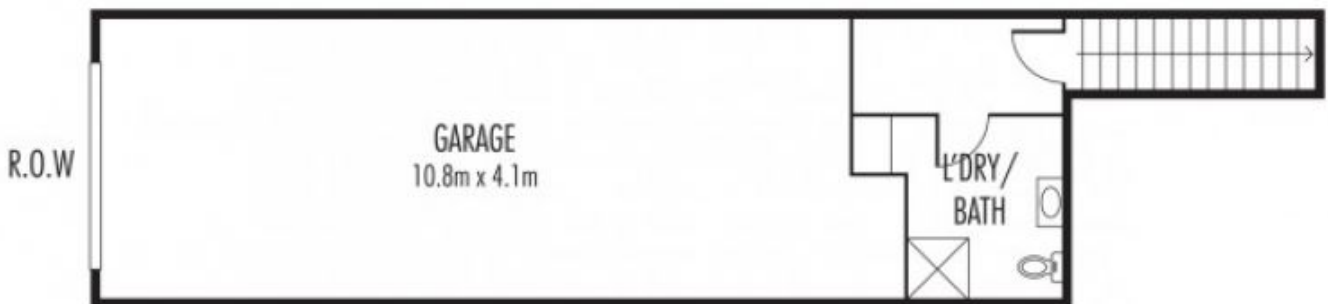


Charles Bongiovanni
03 9326 8883



FIRST FLOOR

SECOND FLOOR



BASEMENT