



27 Sutherland Street MALVERN EAST VIC

4  2  4 

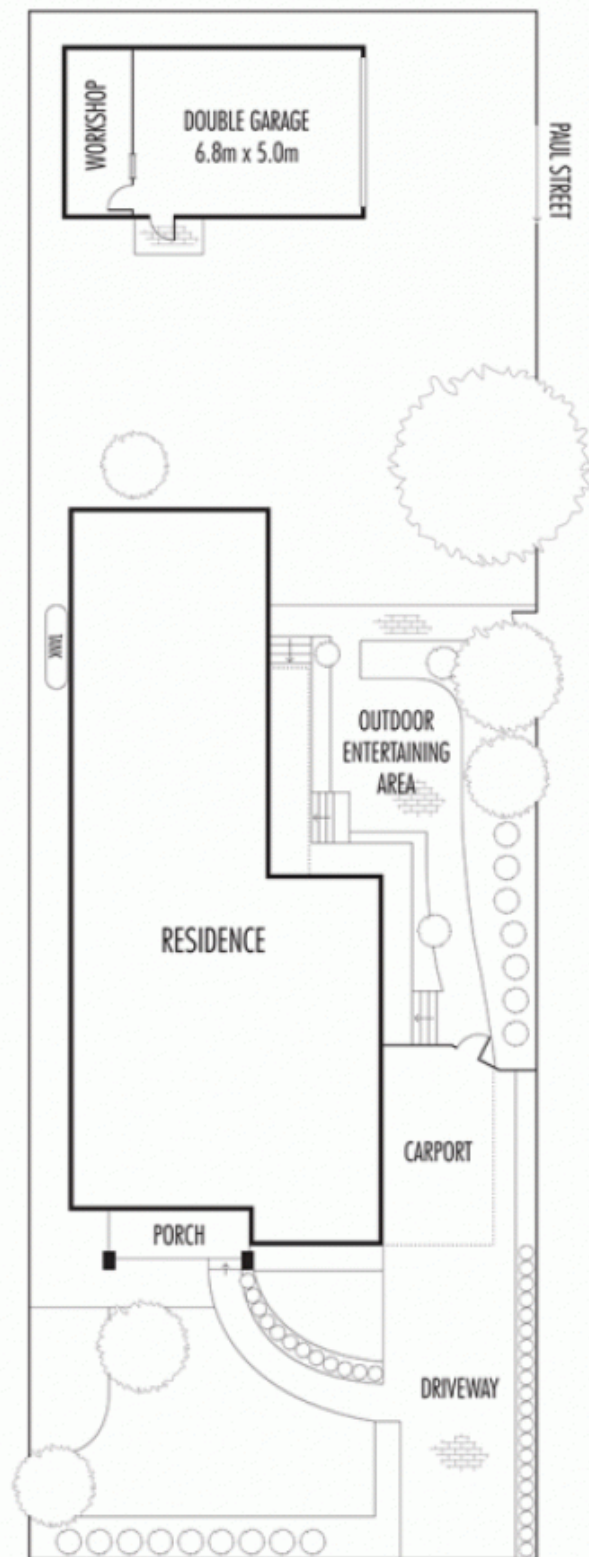
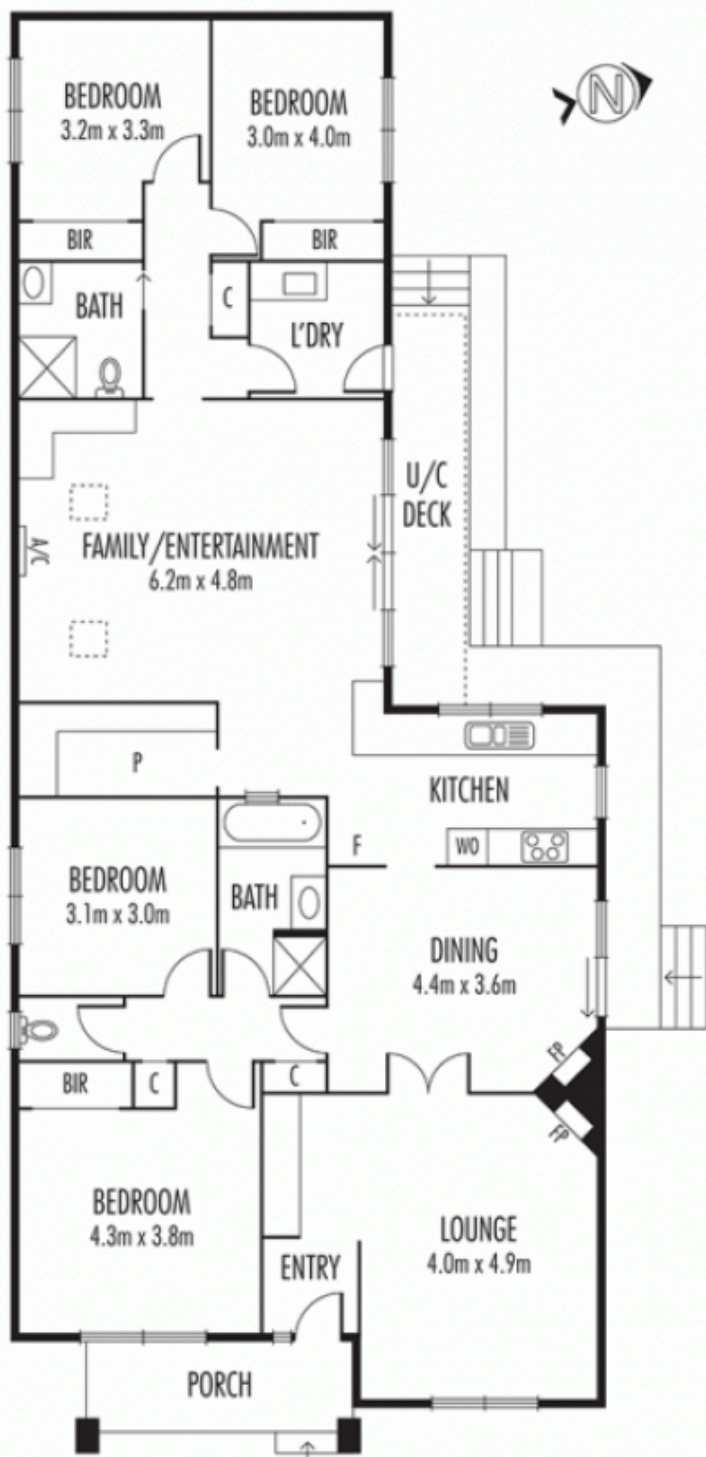
Benefitting from a rare corner position in a much sought after tree lined area, this four-bedroom Californian Bungalow is character-filled, comfortable and complete with prospects to enhance, build a sublime new home or develop (subject to council approval).

On a substantial allotment of approximately 730m² and ideally close to everything from trains to Waverley Oval, Malvern Urban Forest, shops and schools, the elevated home presents enormous scope and as a rare opportunity is sure to draw the interest of many.

Multiple living areas include a lounge and adjoining dining room, each with a fireplace, plus an open kitchen, meals and family room.

Cook up family favourites with the help of the fan-forced oven and four-burner gas cooktop, supported by a dishwasher, timber counters, walk-in pantry and cupboards.

Land Size : 730 sqm
View : <https://www.alexkarbon.com.au/sale/vic/east/malvern-east/residential/house/6208579>



Disclaimer: Please note plans are indicative only and not drawn to exact scale. All dimensions are approximate. Potential buyers should satisfy themselves of any pertinent matters.