



**173-175 Pascoe Vale Road Moonee Ponds VIC**

Pop Up Businesses welcome!  
Flexible/short Lease terms offered.  
All reasonable offers considered.  
Will suit a variety of Uses/Businesses! (STCA)

- 2 Street Frontages, rear off street parking
- Approx 7 kilometres from Melbourne's CBD
- Transport at your door step
- Available for Immediate Access
- Rear Outdoor area available as a separate lease
- Well over 100 sqm of space!

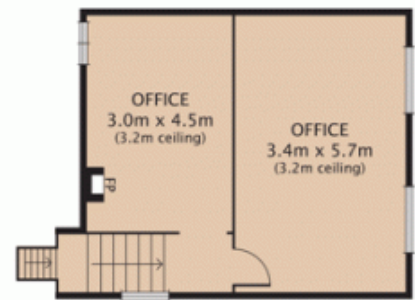
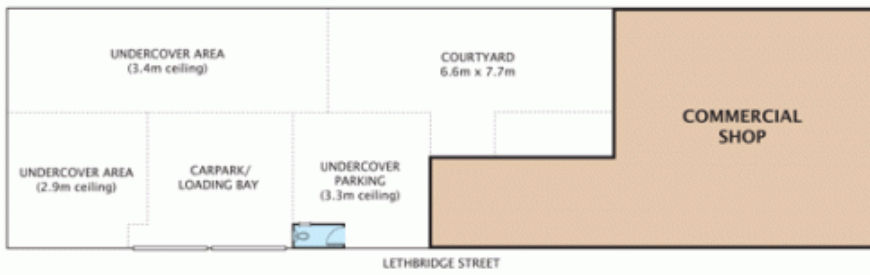
alexkarbon Real Estate  
122 Errol Street,  
North Melbourne

**Building Size** : 135 sqm  
**View** : <https://www.alexkarbon.com.au/lease/vic/north/moonee-ponds/commercial/retail/6208100>



**Gianni Fazzari**  
**03 9326 8883**

# 173-175 PASCOE VALE ROAD, MOONEE PONDS



Disclaimer: Please note plans are indicative only and not drawn to exact scale. All dimensions are approximate. Potential buyers should satisfy themselves of pertinent matters.