

333 Queensberry Street NORTH MELBOURNE VIC

Now with an allowable development height of at least 24 metres*

A superb boutique development opportunity

Multiple street frontages to Queensberry Street and Little Cobden Street

CCZ5 - Capital city zone

Two storey office site building with 6 partitioned offices, boardroom, work space area and reception

Less than 1km to the Melbourne CBD and within close proximity to the Queen Victoria Market

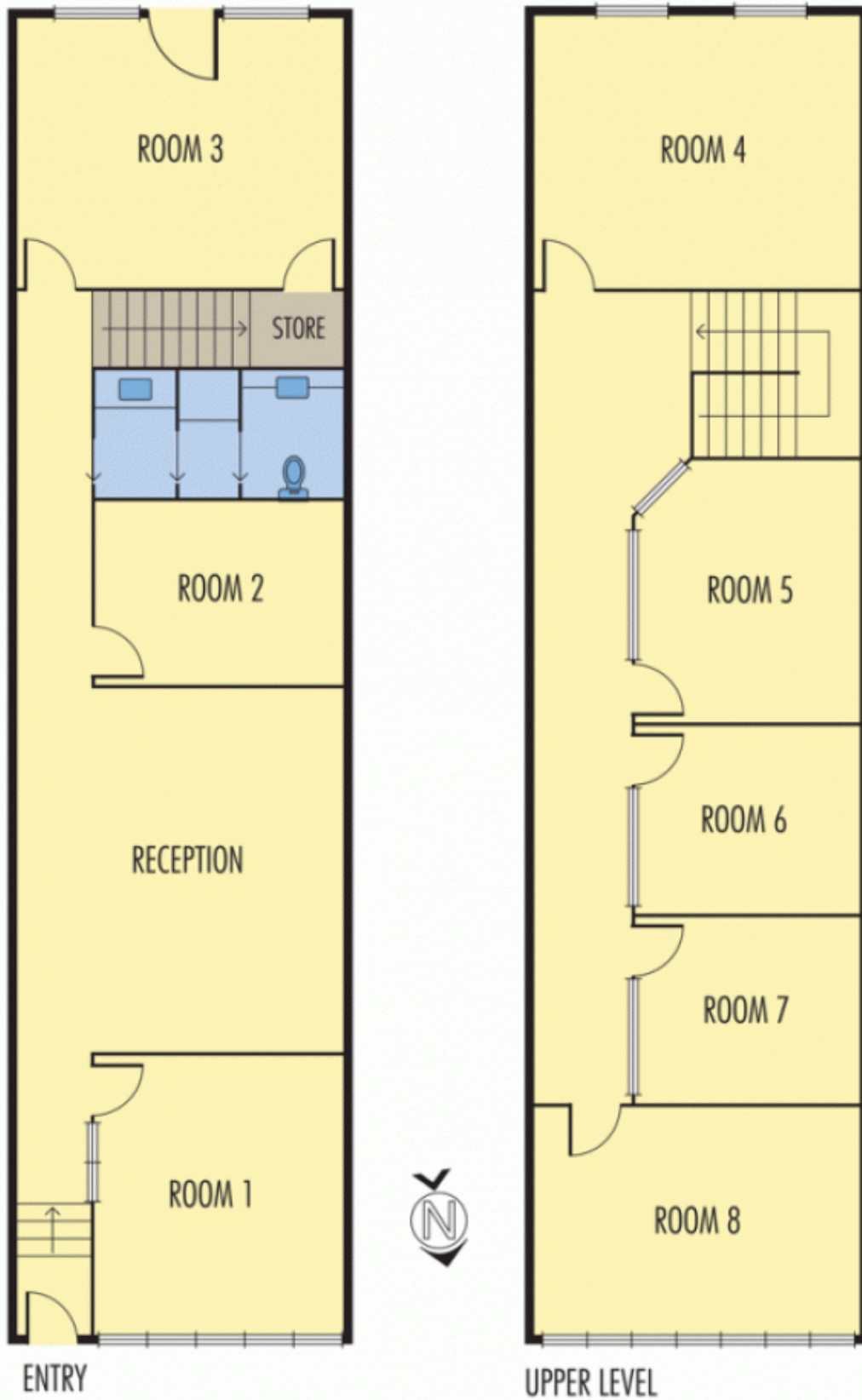
Ideally located within a stroll of trams, Melbourne

Building Size : 210 sqm
Land Size : 103 sqm
View : <https://www.alexkarbon.com.au/sale/vic/inner-city/north-melbourne/commercial/development/6208094>



Charles Bongiovanni
03 9326 8883

333 QUEENSBERRY STREET, NORTH MELBOURNE



Disclaimer: Please note plans are indicative only and not drawn to exact scale. All dimensions are approximate. Potential buyers should satisfy themselves of any pertinent matters.